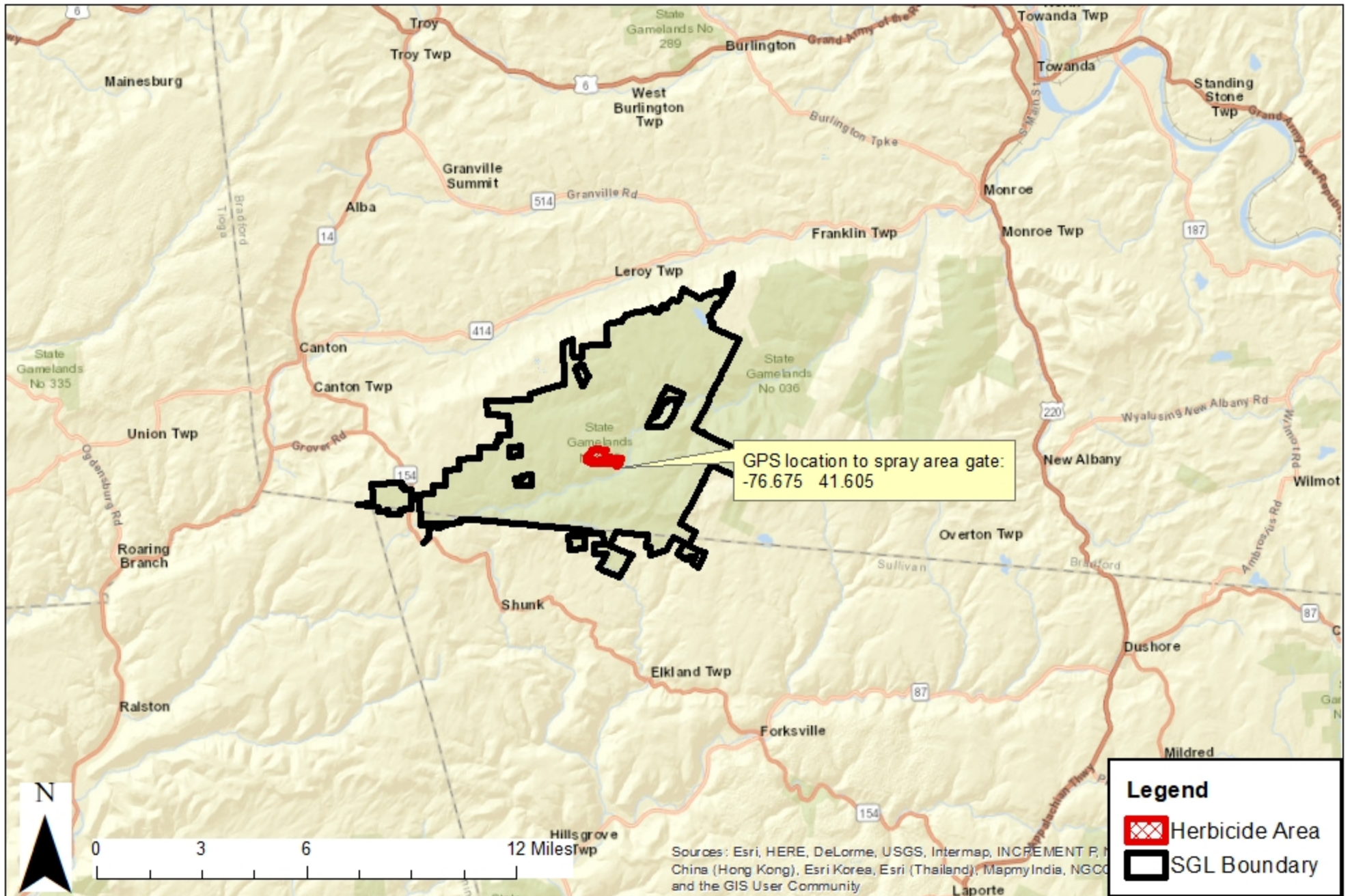


Bradford County  
Leroy and Franklin Townships

# Little Bitty Location Map SGL 12

Block 1: 107 Acres  
Block 2: 41 Acres  
Block 3: 18 Acres  
Total Acres: 166 Acres

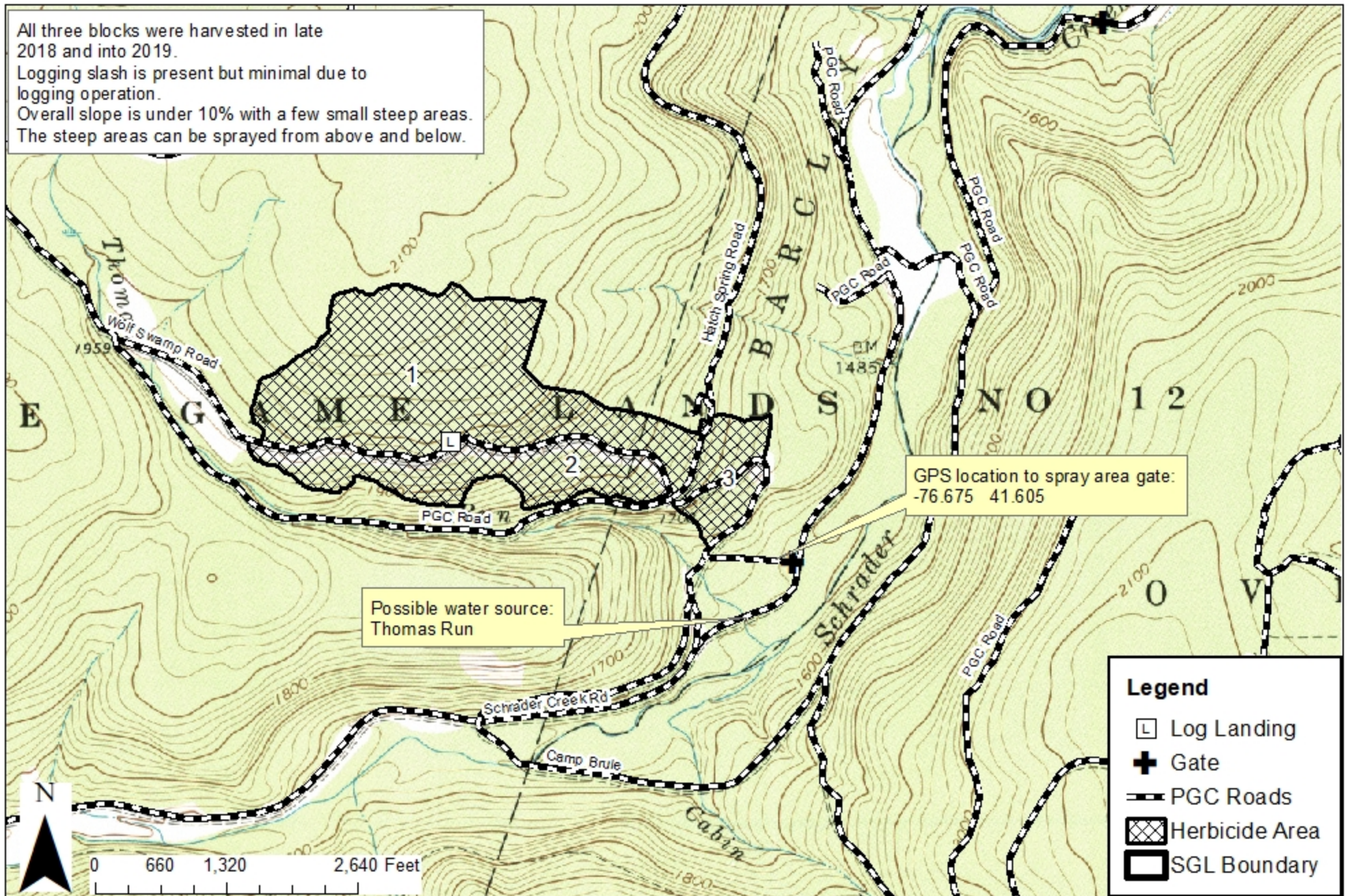




# Little Bitty Herbicide Map SGL 12

Block 1: 107 Acres  
Block 2: 41 Acres  
Block 3: 18 Acres  
Total Acres: 166 Acres

All three blocks were harvested in late 2018 and into 2019.  
Logging slash is present but minimal due to logging operation.  
Overall slope is under 10% with a few small steep areas.  
The steep areas can be sprayed from above and below.



GPS location to spray area gate:  
-76.675 41.605

Possible water source:  
Thomas Run

**Legend**

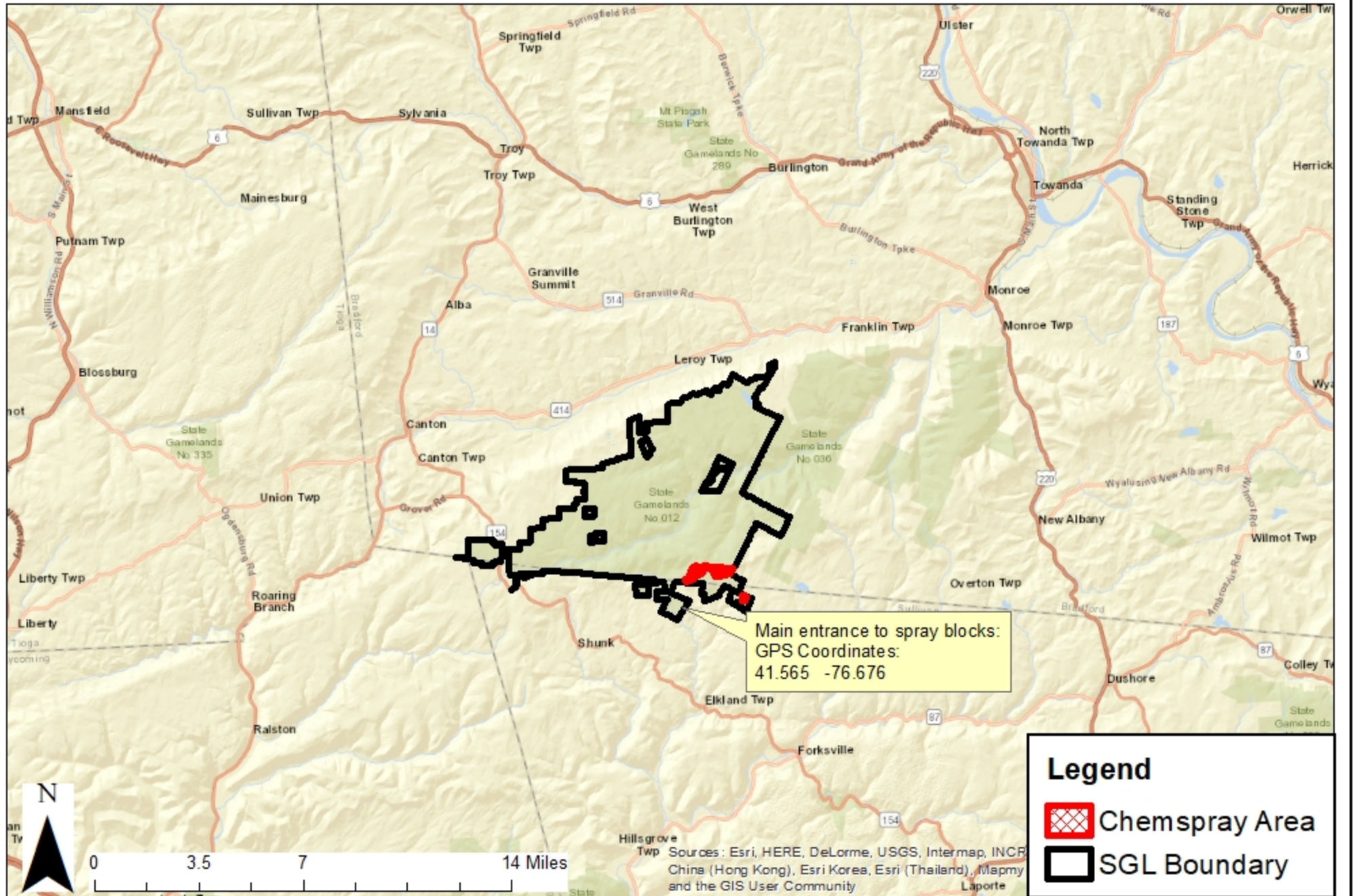
- Log Landing
- ⊕ Gate
- - - PGC Roads
- ▨ Herbicide Area
- ▭ SGL Boundary



Bradford County  
Overton Township  
Sullivan County  
Elkland Township

# Painter's Peak Timber Sale Location Map SGL 12

Block 1: 92 Acres  
Block 2: 65 Acres  
Block 3: 26 Acres  
Block 4: 14 Acres  
Total: 197 Acres





Bradford County  
Overton Township  
Sullivan County  
Elkland Township

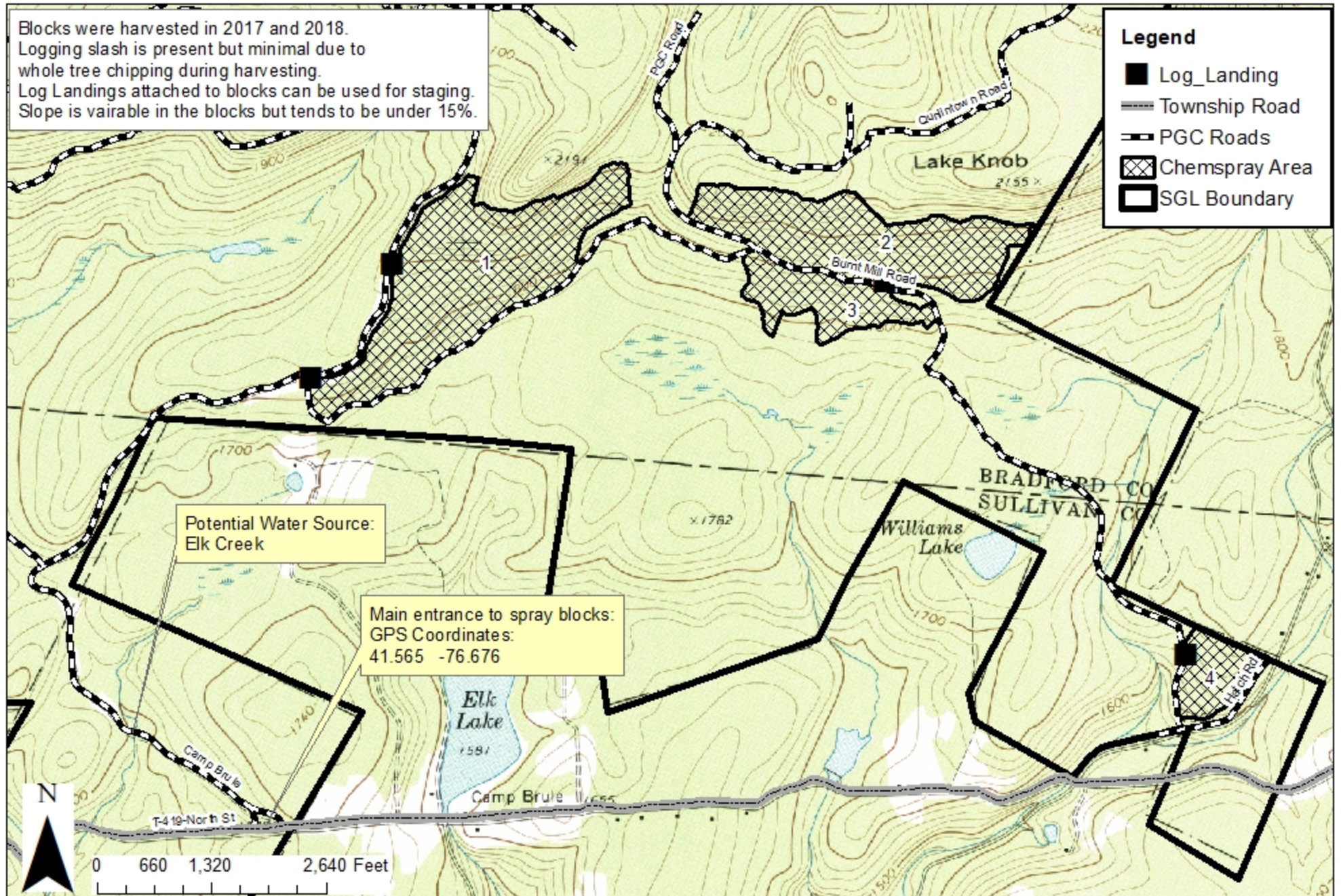
# Painter's Peak Timber Sale Herbicide Map SGL 12

Block 1: 92 Acres  
Block 2: 65 Acres  
Block 3: 26 Acres  
Block 4: 14 Acres  
Total: 197 Acres

Blocks were harvested in 2017 and 2018.  
Logging slash is present but minimal due to  
whole tree chipping during harvesting.  
Log Landings attached to blocks can be used for staging.  
Slope is variable in the blocks but tends to be under 15%.

### Legend

- Log\_Landing
- Township Road
- - - PGC Roads
- ▣ Chemspray Area
- SGL Boundary

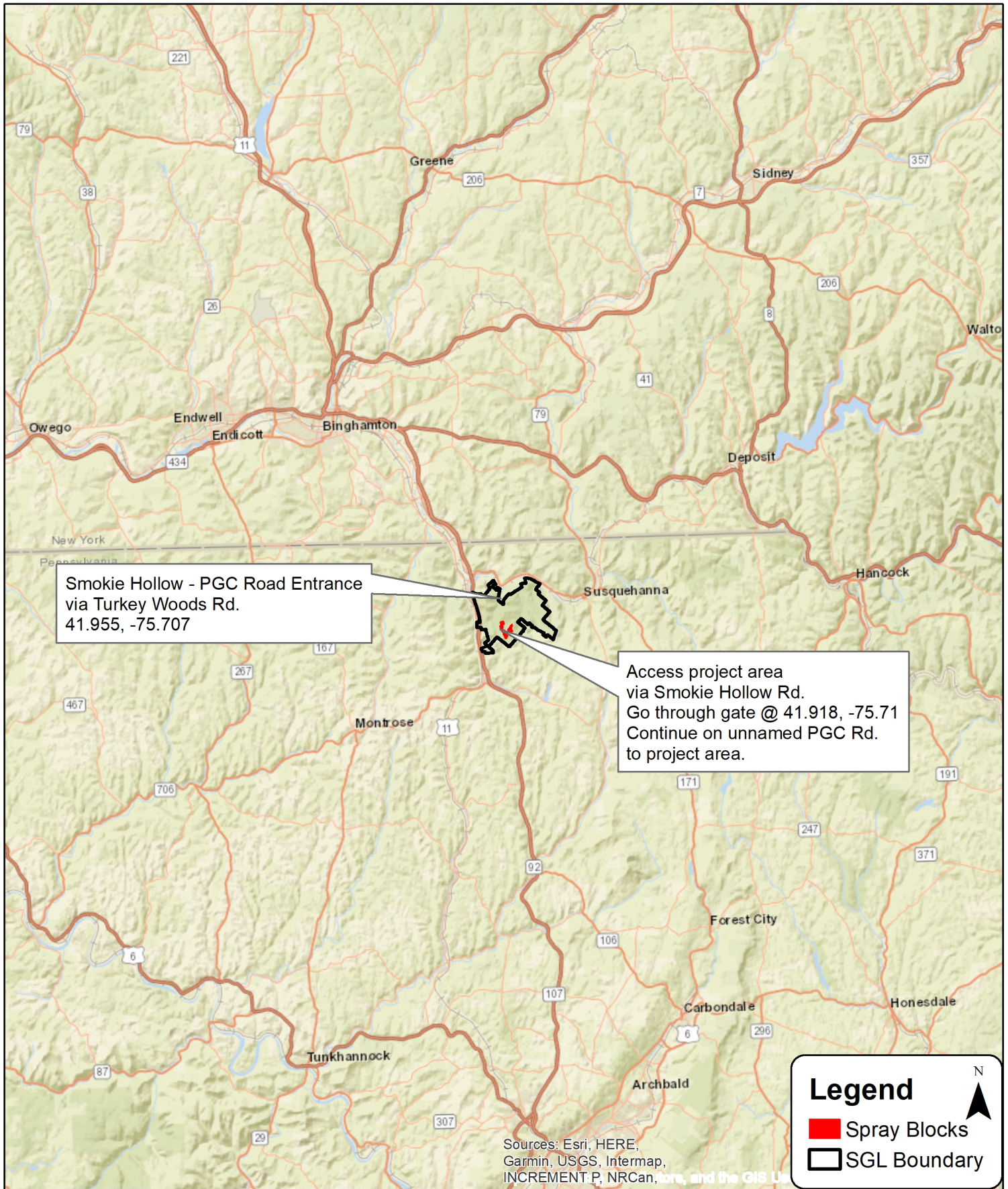




# Third Gate Herbicide 035-2019 Location Map



1 inch = 8 miles

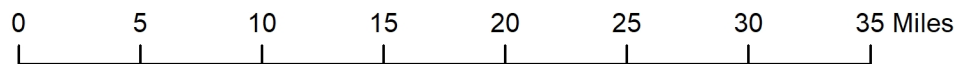


Smokie Hollow - PGC Road Entrance  
via Turkey Woods Rd.  
41.955, -75.707

Access project area  
via Smokie Hollow Rd.  
Go through gate @ 41.918, -75.71  
Continue on unnamed PGC Rd.  
to project area.

**Legend**

- Spray Blocks
- SGL Boundary



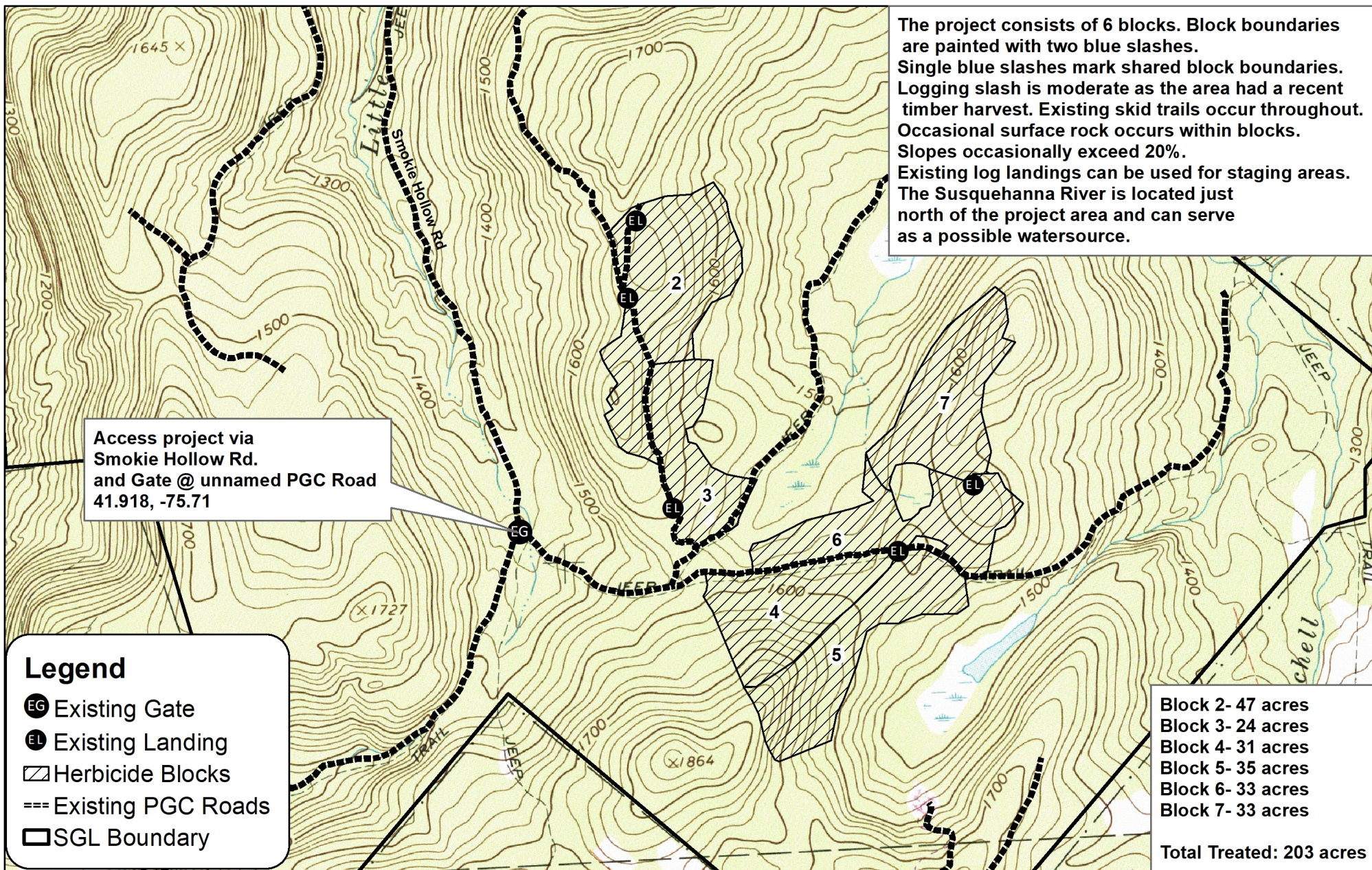
Sources: Esri, HERE, Garmin, USGS, Intermap, INCREMENT P, NRCan, [Terra](#), and the GIS User Community



# Third Gate Herbicide State Game Lands 035 Susquehanna County Great Bend Township



1 inch = 1,320 feet



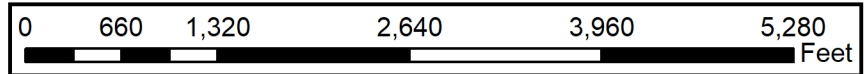
The project consists of 6 blocks. Block boundaries are painted with two blue slashes. Single blue slashes mark shared block boundaries. Logging slash is moderate as the area had a recent timber harvest. Existing skid trails occur throughout. Occasional surface rock occurs within blocks. Slopes occasionally exceed 20%. Existing log landings can be used for staging areas. The Susquehanna River is located just north of the project area and can serve as a possible water source.

Access project via Smokie Hollow Rd. and Gate @ unnamed PGC Road 41.918, -75.71

**Legend**

- EG Existing Gate
- EL Existing Landing
- ▨ Herbicide Blocks
- === Existing PGC Roads
- ▭ SGL Boundary

Block 2- 47 acres  
 Block 3- 24 acres  
 Block 4- 31 acres  
 Block 5- 35 acres  
 Block 6- 33 acres  
 Block 7- 33 acres  
**Total Treated: 203 acres**

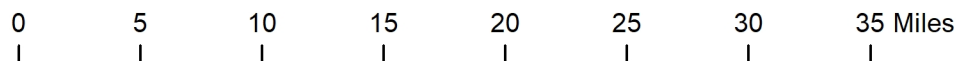
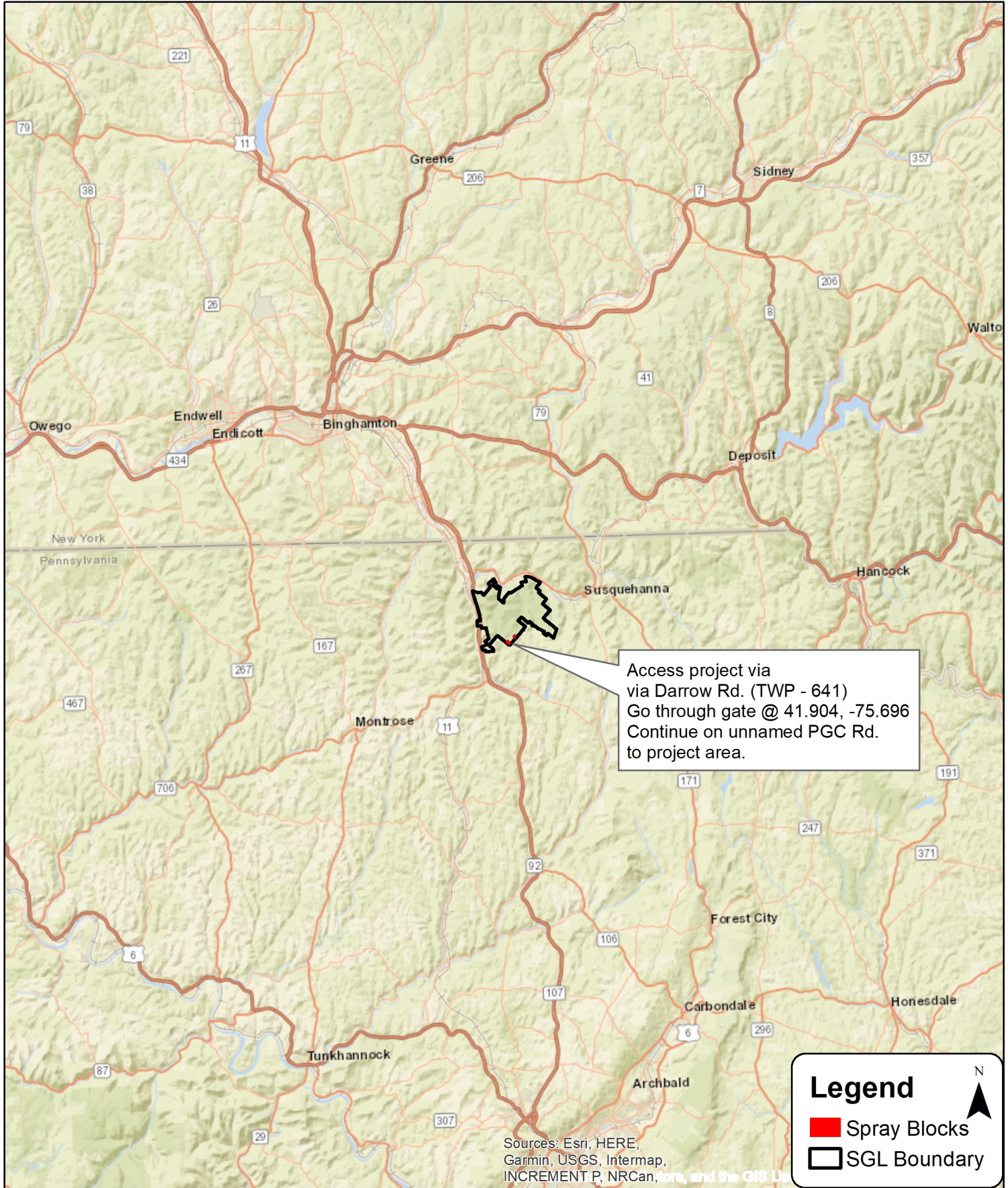




# Highlands 2 Broadcast Herbicide 035-2019 Location Map



1 inch = 8 miles



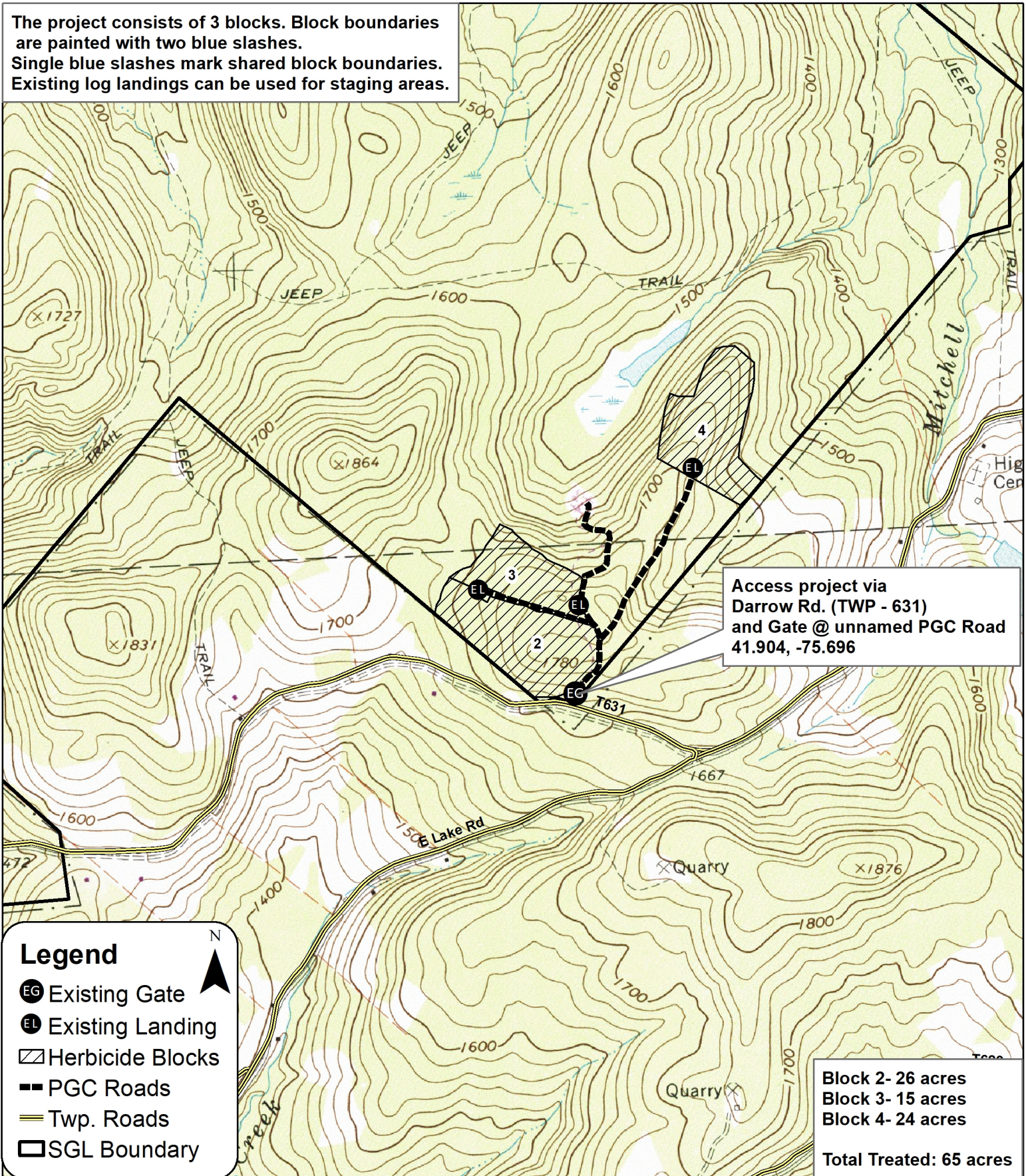




# Highlands 2 Broadcast Herbicide State Game Lands 035 Susquehanna County Great Bend & New Milford Townships

1 inch = 1,320 feet

The project consists of 3 blocks. Block boundaries are painted with two blue slashes. Single blue slashes mark shared block boundaries. Existing log landings can be used for staging areas.



Access project via  
Darrow Rd. (TWP - 631)  
and Gate @ unnamed PGC Road  
41.904, -75.696

**Legend**

- Existing Gate
- Existing Landing
- Herbicide Blocks
- PGC Roads
- Twp. Roads
- SGL Boundary

Block 2- 26 acres  
Block 3- 15 acres  
Block 4- 24 acres  
Total Treated: 65 acres

